

EURO CHAIR



OTAGO FURNITURE

A strong lightweight chair, ideally suited for visitor, dining & activities.



PRODUCT DETAILS

- Engineered timber legs & arms for max. strength.
- Upholstered seat and back.
- A very easy chair to keep clean and hygienic.
- Excellent lumbar support.

DIMENSIONS (cm)

Height	85.5
Width	55
Depth	58
Seat (HWD)	48.5 x 47 x 46
Arms (HW)	66.5 - 64.5 x 4
Weight (kg)	8

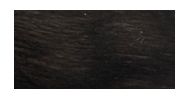
MATERIALS

- Solid Beech Timber.
- European Beech formed components.
- Nylon floor glides.

TIMBER FINISHES



Beech Natural



Ebony Beech

These are our preferred Fabric Suppliers – please view their websites.



UNIQUE
FABRICS

WARWICK

maxwellrogers/fabrics

SENECA
TEXTILES

JAMES DUNLOP | TEXTILES

textilia

CHARLES PARSONS
Est. 1915

materialised



MADE IN AOTEAROA NEW ZEALAND